



Reactor-Ready Duo™

Lab Reactors



All the benefits of Reactor-Ready with two vessels
on one compact framework - 100 ml to 5 litres

Reactor-Ready Duo

Supports two glass reaction vessels of different or same volume from 100 ml to 5 litres

Reactor-Ready Duo shares the same unique features as Reactor-Ready, except that it supports two separate jacketed glass reaction vessels. The system can be configured to operate with a single thermoregulator controlling the temperature of both vessels simultaneously, or with two thermoregulators controlling the temperature of each vessel independently.



Unique vessel clamp

- supports two vessels
- change vessels independently
- change vessels in minutes

Vessels

- 100 ml to 5 litres
- combine different volumes
- vacuum jacketed option
- process geometry

Simple stirrer alignment

- set and lock
- independent stirring for each vessel

Patented stirrer coupling

- drop in
- no tools
- no fuss

Hose couplings

- quick release
- connect in seconds
- chemically resistant PEEK

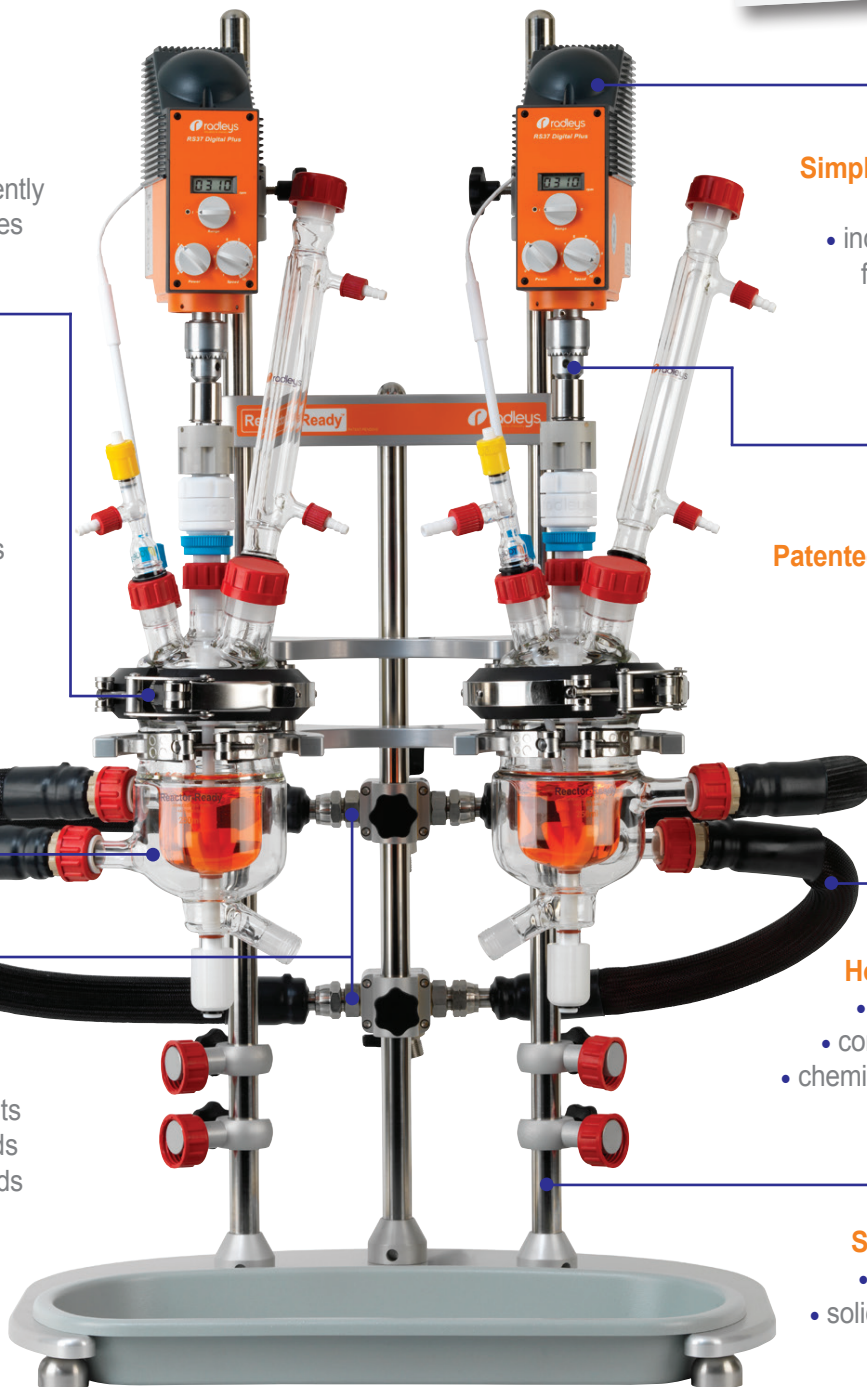
Thermofluid manifolds

- choice of two manifold kits
- single circulator manifolds
- double circulator manifolds



Strong framework

- heavy duty base
- solid s/steel support rods
- large drip tray



Why Reactor-Ready Duo?

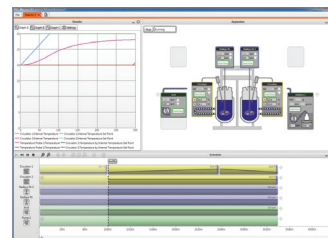
All the benefits of Reactor-Ready with two vessels in parallel or series

Features include

- Rapid exchange of both vessels independently, with quick-release vessel clamp and hose couplings.
- Choice of manifold kits allow two vessels to run from a single thermoregulator or two separate thermoregulators.
- System accepts two overhead stirrers which can be operated and moved independently.

Applications

- Parallel synthesis or reaction optimisation: use the same or different size vessels and vary stirring speed, stirrer shape and temperature between vessels as appropriate.
- Two stage reaction: transfer reactant from one vessel to the other using vacuum or a pump.
- Single reaction vessel: using the second vessel as either a receiving or feed vessel (where reagents can be pre-heated or pre-cooled prior to addition).
- Use optional AVA Software to control fluid transfer between vessels.



Similar vessels with
double circulator manifold kit



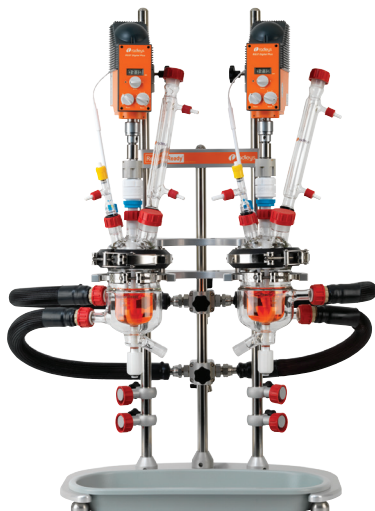
Different vessels with
double circulator manifold kit



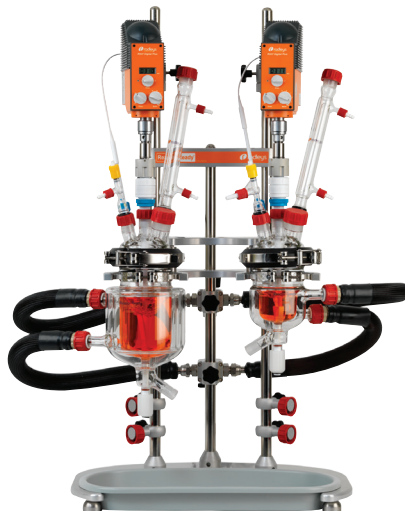
Single vessel with
double circulator manifold kit



Similar vessels with
single circulator manifold Kit



Different vessels with
single circulator manifold Kit



Single vessel with
single circulator manifold Kit



How to order Reactor-Ready Duo...

1. Select the Reactor-Ready Duo core.



2. Choose manifold & hose kit for one or two circulators.



3. Choose the vessel kits you need.



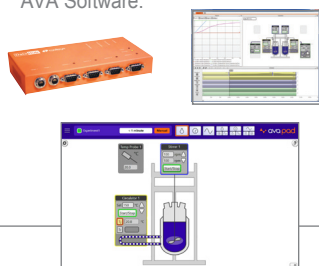
4. Select the overhead stirrers.



5. If you need a thermoregulator, hoses, hose adapters, thermofluid or accessory glassware, then select from the accessory list.



6. For automation, add AVA Software.



Reactor-Ready Duo core system

Easy-to-order Reactor-Ready Duo core system includes all the framework components required for operation

Features include

- Robust heavy-duty framework features solid stainless steel support rods.
- Two separate quick release clamps support each of the vessels independently.
- Large drip tray will retain vessel contents.
- Manifold and hose kits must be ordered separately.

Core system (RR121300) includes

- Stand with base, support rods, bosses and all clamps
- 2 x glass reaction vessel lids
- 2 x vessel FEP O-ring seals and PTFE centering collars
- 2 x PTFE stirrer guides and couplings
- HDPE drip tray
- 2 x stainless steel stirrer drop-in couplings
- 2 x stainless steel vessel support collars
- locking rod for support rod bosses



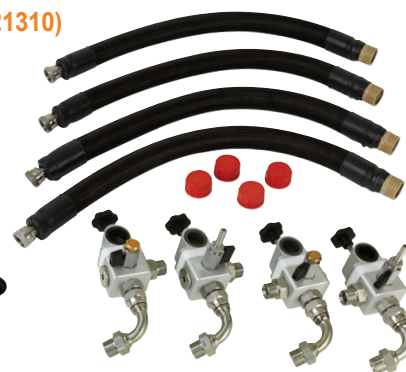
Reactor-Ready Duo manifolds and hoses

A choice of manifold kits for use with one or two thermoregulators

Double thermoregulator manifold and hose kit (RR121310)

This double thermoregulator kit is designed to work with two separate thermoregulators controlling the temperature of each vessel independently. With this set-up both vessels can operate at different temperatures. This is the recommended kit.

- R/H upper return manifold with vent valve
- L/H upper return manifold with vent valve
- R/H lower supply manifold with drain valve
- L/H lower supply manifold with drain valve
- 4 x quick-release insulated hoses, 60 cm
- 4 x sealing caps for hoses



Single circulator manifold and hose kit (RR121305)

This single circulator kit is designed to work with one thermoregulator controlling the temperature of both vessels simultaneously. With this set-up both vessels would operate at the same temperature. The manifolds are supplied with blanking plugs should you wish to run only one vessel.

- central upper return manifold with vent valve
- central lower supply manifold with drain valve
- 4 x quick-release insulated hoses, 70 cm
- 4 x sealing caps for hoses
- 2 x stainless steel blanking plugs



Hei-Torque overhead stirrers

The powerful Hei-Torque range can accomplish the most demanding mixing tasks whilst providing the highest safety

Includes
3 YEAR
warranty



Stirrer models include

- Powerful stirring from 10 to 2000 rpm (Max. recommended speed with Reactor-Ready is 500 rpm).
- Available with basic (Expert) or advanced (Ultimate) features, and a choice of up to 40, 200 or 400 Ncm torque.
- Intuitive control panel for easy operation, safe start and stop to avoid accidental start-up.
- Ultimate range features: set speed limit, adjustable acceleration, set a torque limit.
- Unique Quick-chuck for immediate and convenient 'one-hand' impeller changes, without tools.

	Hei-Torque Core	Hei-Torque Expert 200	Hei-Torque Expert 400	Hei-Torque Ultimate 200	Hei-Torque Ultimate 400
Power rating, motor input/output (W)	105/75	120/80	150/90	120/80	150/90
Number of gears	1	1	2	1	2
Speed range (rpm)	20 to 2000	10 to 2000	10 to 400 and 200 to 2000	10 to 2000	10 to 400 and 200 to 2000
Speed indicator	digital monochrome 2"	digital monochrome 2.4"	digital monochrome 2.4"	digital colour 3.2"	digital colour 3.2"
Speed control	electronic	electronic	electronic	electronic	electronic
Torque, maximum (Ncm)	40	200	400	200	400
Torque indicator (Ncm)	symbol	symbol	symbol	precise value	precise value
Overheat protection	automatic cut-out	automatic cut-out	automatic cut-out	automatic cut-out	automatic cut-out
Viscosity up to (mPa s)	10,000	100,000	250,000	100,000	250,000
Stirring cap. H:O max. (L)	25	50	100	50	100
Shaft diameter, max. (mm)	10.5	10.5	10.5	10.5	10.5
Dimensions (W x H x D) (mm)	70 x 281.5 x 195	86 x 350 x 247	93 x 350 x 247	86 x 350 x 247	93 x 350 x 247
Weight (kg)	2.3	5.1	5.3	5.1	5.3
Set speed limit, Torque limit, Adjustable acceleration	-	-	-	Yes	Yes
Analogue/digital interface	-	-	-	USB and RS232	USB and RS232

For Reactor-Ready the maximum speed is 500 rpm for continuous use for 800 rpm for short periods.

Thermoregulators/circulators

Which thermoregulator should you choose?

- Radleys are a Huber distribution and service partner, so we recommend the Huber range of thermoregulators, circulators, chillers and waterbaths. However, Reactor-Ready is compatible with all leading brands of thermoregulator including Julabo, Lauda, Polyscience, Haake and many others.
- Also available are a range of hoses, adapters, temperature probes and thermofluid for all applications.



Huber Unistat 405



Huber Petite Fleur

Description	Temperature range °C	Heating power (kW)	Cooling power at 0 °C (kW)	Application Examples	
Huber Ministat 230	-45 °C to 200 °C	2.0	0.38	250 ml	Cool to -10 °C in <1 hr, then heat to 130 °C in <30 mins
				1 litre	Control at 0 °C, then heat to 100 °C in 20 mins
Huber Petite Fleur	-40 °C to 200 °C	1.5	0.45	500 ml	Cool to -20 °C in approx 30 mins, then heat to 150 °C in <30 mins
				1 litre	Heat to 150 °C, then cool to 0 °C at > 2.5 K/min
Huber Unistat Tango	-45 °C to 250 °C	3.0	0.7	1 litre	Cool to -30 °C in <1 hr, then heat to 180 °C in <1 hr
				2 litre	Heat to 180 °C, then cool to 20 °C in approx 1 hr
Huber Unistat 405	-45 °C to 250 °C	3.0	1.0	2 litre	Cool to -20 °C in <30 mins, then heat to 100 °C in <30 mins
				5 litre	Control at 20 °C, then cool to -20 °C in approx 70 mins

The above applications are intended as a guide to the relative performance of each Huber thermoregulator with a range of vessel sizes and are not a prediction of actual performance. To achieve optimum performance the use of vacuum jacketed vessels is recommended for below ambient temperature applications. For comprehensive advice on thermoregulator selection please contact your local Radleys distributor.

How to order Reactor-Ready Duo

1. Select the Reactor-Ready Duo core: RR121300.
2. Choose manifold and hose kit for one or two circulators.
3. Choose the vessel kit or kits you require by selecting the vessel volume and style.
4. Select the overhead stirrers you require.
5. If you need a thermoregulator, hoses, hose adapters, thermofluid or accessory glassware, then select accessories
6. Add AVA Control Software.

Reactor-Ready Duo Core System

- RR121300 Reactor-Ready Duo core system includes:
- Duo stand with base, drip tray, support rods, bosses and all clamps
 - 2 x PTFE stirrer guides and drop-in couplings
 - 2 x Glass reaction vessel lids with Rodaviss sealing caps
 - 2 x Vessel FEP O-ring seal and PTFE centering collars
 - 2 x Stainless steel vessel support collars

Important: Hoses to connect the Reactor-Ready Duo framework to your thermoregulator are NOT included. You will require hoses with an M24x1.5 female connection or appropriate adapters. See opposite for hoses, adapters and suitable thermoregulators.

Double Circulator Manifold and Hose Kit

- RR121310 Double Circulator Manifold and Hose Kit includes:
- R/H Upper Return Manifold with Vent Valve
 - L/H Upper Return Manifold with Vent Valve
 - R/H Lower Supply Manifold with Drain Valve
 - L/H Lower Supply Manifold with Drain Valve
 - 4 x Quick-Release Insulated Hoses, 60cm
 - 4 x Sealing Caps for Hoses

Single Circulator Manifold and Hose Kit

- RR121305 Single Circulator Manifold and Hose Kit includes:
- Central Upper Return Manifold with Vent Valve
 - Central Lower Supply Manifold with Drain Valve
 - 4 x Quick-Release Insulated Hoses, 70cm
 - 4 x Sealing Caps for Hoses
 - 4 x Stainless Steel Blanking Plugs

Process Reaction Vessel Kits

Process vessel kits include a Pt100 temperature probe and turbine stirrer matched to the vessel size. Each vessel kit includes:

- Reaction vessel
- PTFE turbine stirrer
- Sidearm couplings
- Pt100 PTFE temperature probe with LEMO connector
- PTFE temperature probe adapter



Process Reaction Vessel Kits

- RR120105 100ml Single Jacketed Process Vessel Kit
 RR120107 100ml Vacuum Jacketed Process Vessel Kit
 RR120110 250ml Single Jacketed Process Vessel Kit
 RR120115 250ml Vacuum Jacketed Process Vessel Kit
 RR120120 500ml Single Jacketed Process Vessel Kit
 RR120125 500ml Vacuum Jacketed Process Vessel Kit
 RR120130 1000ml Single Jacketed Process Vessel Kit
 RR120135 1000ml Vacuum Jacketed Process Vessel Kit
 RR120140 2000ml Single Jacketed Process Vessel Kit
 RR120145 2000ml Vacuum Jacketed Process Vessel Kit
 RR120142 3000ml Single Jacketed Process Vessel Kit
 RR120147 3000ml Vacuum Jacketed Process Vessel Kit
 RR120150 5000ml Single Jacketed Process Vessel Kit
 RR120155 5000ml Vacuum Jacketed Process Vessel Kit



Kit includes Turbine Stirrer

Hei-Torque Overhead Stirrers

- 501-60410-00 Hei-Torque Core
 501-62010-00 Hei-Torque 200 Expert
 501-62020-00 Hei-Torque 200 Ultimate (USB/RS232)
 501-64010-00 Hei-Torque 400 Expert
 501-64020-00 Hei-Torque 400 Ultimate (USB/RS232)

Huber Thermoregulators (Circulators)

- HB2008.0005.01 Huber CC-K6 Pilot ONE Controller
 HB2015.0005.01 Ministat 230 Pilot ONE Controller
 HB2016.0005.01 Ministat 240 Pilot ONE Controller
 HB1030.0001.01 Petite Fleur Pilot ONE Controller
 HB1000.0037.01 Unistat Tango Pilot ONE Controller
 HB1002.0045.01 Unistat 405 Pilot ONE Controller
 HB1068.0019.01 Unistat 705 Pilot One Controller

Thermoregulator Hoses

Insulated Hose with PTFE Inner

- HB9325 M24x1.5 Insulated Hose NW12 100cm -60°C to +260°C
 HB9326 M24x1.5 Insulated Hose NW12 150cm -60°C to +260°C
 HB9327 M24x1.5 Insulated Hose NW12 200cm -60°C to +260°C
 HB9328 M24x1.5 Insulated Hose NW12 300cm -60°C to +260°C

Insulated Hose with Metal Inner

- HB9274 M24x1.5 Insulated Hose NW12 100cm -100°C to +350°C
 HB9275 M24x1.5 Insulated Hose NW12 150cm -100°C to +350°C
 HB9276 M24x1.5 Insulated Hose NW12 200cm -100°C to +350°C
 HB9277 M24x1.5 Insulated Hose NW12 300cm -100°C to +350°C

Thermoregulator Adapters and Thermofluid

Adapters

- HB6724 M24x1.5 Female to M16x1 Male Adapter
 HB6945 M24x1.5 Male to M16x1 Female Adapter
 HB6195 M16x1 90° Adapter
 HB9256 M24x1.5 90° Adapter
 HB6089 M16x1 Nut
 HB12634 M24x1.5 Nut
 HB6086 M16x1 Hose Connector NW8
 HB6091 M16x1 Ball Valve
 HB9236 M24x1.5 Ball Valve

Thermofluid

- HB6161 SilOil M20.195/235.20, 5 Litre -20°C to +195°C/235°C
 HB6162 SilOil M20.195/235.20, 10 Litre -20°C to +195°C/235°C
 HB6163 SilOil M40.165/220.10, 5 Litre -40°C to +165°C/220°C
 HB6164 SilOil M40.165/220.10, 10 Litre -40°C to +165°C/220°C
 HB6165 SilOil M60.115/200.05, 5 Litre -60°C to +115°C/200°C
 HB6166 SilOil M60.115/200.05, 10 Litre -60°C to +115°C/200°C
 HB6479 DW-Therm M90.200.02, 10 Litre -90°C to +200°C (Unistats only)

Reactor-Ready Duo vessel compatibility guide

The following combinations of reaction vessel sizes can be used in the Reactor-Ready Duo.

	100ml	250 ml	500 ml	1000 ml	2000 ml	3000 ml	5000 ml
Process Vessel, Single Jacketed							
100 ml	●	●	●	●	●	●	●
250 ml	●	●	●	●	●	●	●
500 ml	●	●	●	●	●	●	●
1000 ml	●	●	●	●	●	●	●
2000 ml	●	●	●	●	●	●	●
3000 ml	●	●	●	●	●	●	n/a
Process Vessel, Vacuum Jacketed							
100 ml	●	●	●	●	●	●	●
250 ml	●	●	●	●	●	●	●
500 ml	●	●	●	●	●	●	●
1000 ml	●	●	●	●	●	●	●
2000 ml	●	●	●	●	●	●	n/a
3000 ml	●	●	●	●	●	n/a	n/a
5000 ml	●	●	●	●	n/a	n/a	n/a

Reactor-Ready Duo Accessories

General Maintenance Accessories

- RR121150 Reactor-Ready Maintenance Kit (includes items listed below)
- RR121027 Oil Wipe for Support Rods, Pack 10
- RR121063 Stirrer Guide Bearing Seal B24 10mm
- RR121064 Stirrer Guide Ferrule and Shaft Seal B24 10mm
- RR121071 23mm Viton O-Rings for Quick Release Hose Coupling, Pack 2
- RR121072 28mm Viton O-Rings for Quick Release Hose Coupling, Pack 2
- RR121090 FEP Encapsulated Silicone Vessel O-Ring
- RR166100 Replacement 15mm Piston Top O-Ring
- RR166102 Replacement 15mm Piston Middle O-Ring

Glassware Accessories

- RR139009 Condenser Jacket Coil Rodaviss B29 + GL14 + fittings
- RR139005 Condenser Liebig 250mm B29 + GL14 + fittings
- RR139007 Condenser Double Surface 200mm B29 + GL14 + fittings
- RR139011 Right Angle Adapter B29 + GL14 + PTFE fittings
- RR139013 50ml Graduated Dropping Funnel Equalising Arm B24
- RR139015 100ml Graduated Dropping Funnel Equalising Arm B24
- RR139017 250ml Graduated Dropping Funnel Equalising Arm B24
- RR139019 500ml Graduated Dropping Funnel Equalising Arm B24
- RR139021 1000ml Graduated Dropping Funnel Equalising Arm B24
- RR139023 Swan Neck Adapter Angled B24 to Vertical B24
- RR139025 Gas Purge Adapter B24 + GL14 + fittings
- RR139027 Glass Cone Stopper B19
- RR139029 Glass Cone Stopper B24
- RR139031 Glass Cone Stopper B29
- RR139033 Glass Cone Stopper B34
- RR139035 Enlarging Adapter B24 to B29
- RR139037 Enlarging Adapter B29 to B34
- RR139039 Reducing Adapter B24 to B19
- RR139041 Reducing Adapter B29 to B19
- RR139043 Reducing Adapter B29 to B24
- RR139045 Reducing Adapter B34 to B19
- RR139047 Reducing Adapter B34 to B24
- RR139049 Reducing Adapter B34 to B29
- RR139051 Oil Bubbler Type 1 B24 + GL14 + fittings
- RR139053 Solid Additions Funnel B34 (with extended tube)
- RR139057 Valved Liquid Inlet Adapter B24 to GL14
- RR139063 PTFE Hose Adapter B19 for 12mm ID Tubing
- RR20518 Boss Head - 15-25mm, 8-12mm
- RR139069 3-Prong Clamp
- RR139079 PTFE Flexible Bellows B24
- RR139081 PTFE Flexible Bellows B29
- RR139083 PTFE Flexible Bellows B34
- RR139150 Reflux Divider Head B29 + GL18 + PTFE Fitting
- RR139152 Reflux Divider Head B29 + GL18 + Temp Probe Port B14
- RR139190 Reflux Divider Kit
- RR139192 Reflux Divider Kit with Vapour Temp Kit
- RR139154 250ml Receiver Flask 2 x B24 Socket, + B24 Cone and Tap
- RR139324 500ml Receiver Flask 3 x B24 Socket, + B24 Cone and Tap
- RR139326 1000ml Receiver Flask 3 x B24 Socket, + B24 Cone and Tap

PTFE Pt100 Temperature Probes and Adapters

- RR140250 Probe 8mm with LEMO Plug - 100ml, 250ml + 500ml Vessels
- RR141000 Probe 9mm with LEMO Plug - 1000ml, 2000ml + 3000ml Vessels
- RR145000 Probe 9mm with LEMO Plug - 5000ml Vessel
- RR140010 PTFE Temperature Probe Adapter - 8mm
- RR140015 PTFE Temperature Probe Adapter - 9mm

Reaction Vessel Support Collar

- RR121048 Vessel Support Collar

Glass Vessel Lid

- RR136000 DN100 Glass 5 Neck Lid - 1 x B19, 2 x B24, 1 x B29, 1 x B34
Includes Rodaviss sealing caps

PTFE Vessel Lids

- RR136100 DN100 PTFE 5 Neck Lid & 2 Blanked Ports. 1 x B19, 2 x B24, 1 x B29, 1 x B34
Includes PTFE sockets/blanking plugs and Rodaviss sealing caps
- RR136110 DN100 PTFE Lid only with 7 Threaded Ports. 2 x 1/4" NPT, 5 x 3/4" NPT
PTFE sockets are not included - select from below

PTFE Vessel Lids - for Blaze Metrics Probe

- RR136121 DN100 PTFE 5 Neck Blaze Lid & 2 Blanked Ports. 1 x B19, 2 x B24, 1 x B29, 1 x B34. Includes PTFE 14mm and 19mm Compression Fittings, PTFE sockets/blanking plugs and Rodaviss sealing caps
- RR136120 DN100 PTFE Blaze Lid only with 7 Threaded Ports. 2 x 1/4" NPT, 5 x 3/4" NPT
PTFE sockets are not included - select from below

PTFE Rodaviss Sockets, Compression Fittings & Blanking Plugs for PTFE Lids

- RR136300 Rodaviss B19 Socket Adapter (3/4" NPT)
- RR136301 Rodaviss B24 Socket Adapter (3/4" NPT)
- RR136302 Rodaviss B29 Socket Adapter (3/4" NPT)
- RR136303 Rodaviss B34 Socket Adapter (3/4" NPT)
- RR136304 Rodaviss B45 Socket Adapter (3/4" NPT)
- RR136314 3mm Bore Compression Fitting 1/4" NPT
- RR136315 6mm Bore Compression Fitting 1/4" NPT
- RR136316 8mm Bore Compression Fitting 3/4" NPT
- RR136317 12mm Bore Compression Fitting 3/4" NPT
- RR136318 14mm Bore Compression Fitting 3/4" NPT
- RR136319 16mm Bore Compression Fitting 3/4" NPT
- RR136320 19mm Bore Compression Fitting 3/4" NPT
- RR136327 PTFE Blanking Plug 1/4" NPT
- RR136328 PTFE Blanking Plug 3/4" NPT

Process Reaction Vessels Only

- RR130102 100ml Single Jacketed Process Vessel
- RR130152 100ml Vacuum Jacketed Process Vessel
- RR130252 250ml Single Jacketed Process Vessel
- RR130257 250ml Vacuum Jacketed Process Vessel
- RR130502 500ml Single Jacketed Process Vessel
- RR130552 500ml Vacuum Jacketed Process Vessel
- RR131002 1000ml Single Jacketed Process Vessel
- RR131052 1000ml Vacuum Jacketed Process Vessel
- RR132002 2000ml Single Jacketed Process Vessel
- RR132052 2000ml Vacuum Jacketed Process Vessel
- RR133002 3000ml Single Jacketed Process Vessel
- RR133052 3000ml Vacuum Jacketed Process Vessel
- RR135002 5000ml Single Jacketed Process Vessel
- RR135052 5000ml Vacuum Jacketed Process Vessel

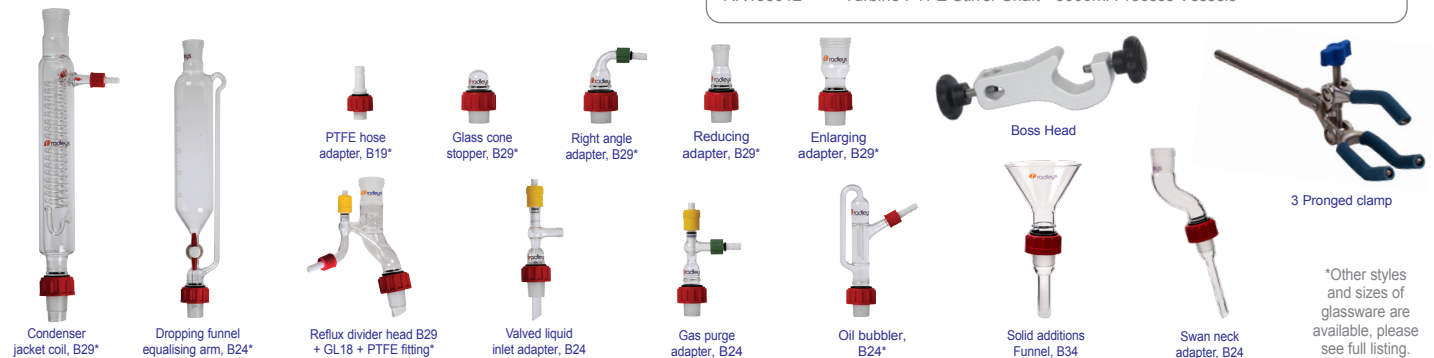
PTFE Stirrer Shafts (for Process Vessels)

- RR150102 Anchor PTFE Stirrer Shaft - 100ml Process Vessels
- RR150107 Retreat Curve PTFE Stirrer Shaft - 100ml Process Vessels
- RR150112 Turbine PTFE Stirrer Shaft - 100ml Process Vessels
- RR150252 Anchor PTFE Stirrer Shaft - 250ml Process Vessels
- RR150257 Retreat Curve PTFE Stirrer Shaft - 250ml Process Vessels
- RR150262 Turbine PTFE Stirrer Shaft - 250ml Process Vessels
- RR150502 Anchor PTFE Stirrer Shaft - 500ml Process Vessels
- RR150507 Retreat Curve PTFE Stirrer Shaft - 500ml Process Vessels
- RR150512 Turbine PTFE Stirrer Shaft - 500ml Process Vessels
- RR151002 Anchor PTFE Stirrer Shaft - 1000ml Process Vessels
- RR151007 Retreat Curve PTFE Stirrer Shaft - 1000ml Process Vessels
- RR151012 Turbine PTFE Stirrer Shaft - 1000ml Process Vessels
- RR152002 Anchor PTFE Stirrer Shaft - 2000ml Process Vessels
- RR152007 Retreat Curve PTFE Stirrer Shaft - 2000ml Process Vessels
- RR152012 Turbine PTFE Stirrer Shaft - 2000ml Process Vessels
- RR153002 Anchor PTFE Stirrer Shaft - 3000ml Process Vessels
- RR153007 Retreat Curve PTFE Stirrer Shaft - 3000ml Process Vessels
- RR153012 Turbine PTFE Stirrer Shaft - 3000ml Process Vessels
- RR155002 Anchor PTFE Stirrer Shaft - 5000ml Process Vessels
- RR155007 Retreat Curve PTFE Stirrer Shaft - 5000ml Process Vessels
- RR155012 Turbine PTFE Stirrer Shaft - 5000ml Process Vessels

Glassware and accessories

Wide choice of standard glassware to suit your application

Glassware features Rodaviss joints and is compatible with Reactor-Ready lids



Accelerating chemistry



Reactor-Ready Flex

A modular jacketed lab reactor system that accepts vessels from 100 ml to 5 L.



Reactor-Ready Mini

A small benchtop jacketed lab reactor that accepts vessels from 50 ml to 500 ml.



Reactor-Ready Pilot

Process scale reaction work stations for jacketed glass reaction vessels from 5 to 35 litres.



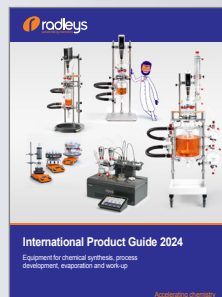
AVA Software

Control and log multiple devices including stirrers, circulators, balances, pumps and temperature sensors.



Mya 4 Reaction Station

A 4-zone reaction station offering safe and precise heating, active cooling, software control and data-logging for 24/7 unattended chemistry.



International Product Guide

Innovative tools for chemical synthesis, process development, work-up and evaporation.

Accelerating chemistry

Radleys provide innovative chemistry equipment for safer, cleaner, greener and more productive chemical research.

Visit www.radleys.com to see our full range of chemistry productivity tools.



Shire Hill, Saffron Walden,
Essex, CB11 3AZ, United Kingdom.
t: +44 1799 513320
e: sales@radleys.com